

Classic CMI

CATIA Teamcenter Enterprise Integration



CMI is the T-Systems high-end solution for the integration of the CAD systems CATIA V4/V5 with the PDM system Teamcenter Enterprise. The CATIA integration product combines the PLM power of Teamcenter Enterprise with the CAD superiority of CATIA and offers the full advantage of collaborative product development.

All from one Source

With over 15 years of experience, the extremely successful CATIA Teamcenter Integration – CMI; by now productively used in more than 9000 installations worldwide; became an industry standard application. It provides proven and reliable functionality for a large range of customers around the world. With a great number of integrated use cases CMI is “ready to use” in various industries including Automotive OEM/supplier, Aerospace & Defense OEM/supplier and Manufacturing. By offering the CATIA V4 and V5 integration as a unified whole, CMI enables a smooth collaboration between CATIA V4 and CATIA V5 even in the same project.

All CATIA files and structure are managed and controlled by Teamcenter Enterprise. This enables the designer to use all the document management functions and collaborative product development abilities of Teamcenter Enterprise with CATIA data structures.

Key Features

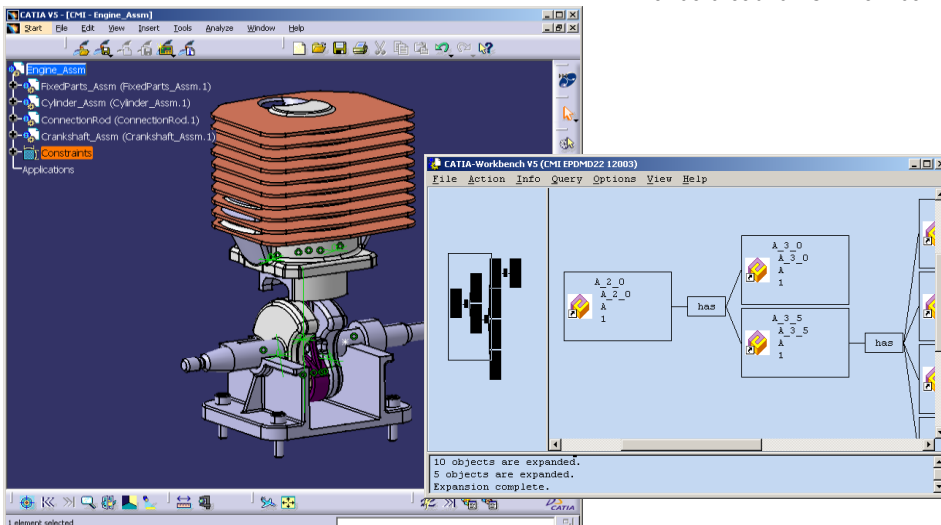
- Change and usage control of CATIA data in a collaborative product development (e.g. version/configuration/view control, access management, life cycle and workflow)
- Integration of bill of material and geometry data
- Working with multiple level assembly structures
- Design in configuration context
- Intuitive CMI Workbench handling allows data transfer from one single PDM browser to both CATIA V4 and V5

CATIA V4 Integration

The CATIA V4 integration provides the user with a sophisticated way of working with multi-level assembly structures in CATIA V4.

CATIA V5 Integration

The CATIA V5 integration offers the ability to drive product structures and BOM from both CAD and PDM.



Technical Highlights

- CATIA V5 local and released cache support
- On-the-fly creation of CATIA V5 assemblies out of Teamcenter Enterprise product structures
- Support of CATDrawing, CATProcess, CATAnalysis
- Support of Design Tables, CATCatalogs and alternative shape representations
- Virtual Workbench – Collects several product structures in a single CATIA V5 window
- CMI Archive – Packages whole CATIA structures in a single PDM object

CMI Support Table

Application	Release
Teamcenter Enterprise	2007, 8.1, and 9.0, other releases on request
CATIA V4	4.2.4 and 4.2.5
CATIA V5	R19, R20, R21, V5-6R2012 to V5-6R2023, other releases on request

Platform	OS Level
IBM	AIX 5.x (32/64 Bit), 6.1, 7.1
SUN	Solaris 8, 10
LINUX (Server)	SUSE Enterprise 9.0, 10.0, 11.0
Microsoft Windows	Windows 7 (64 Bit), Windows 10 (64 Bit)

Contact

T-Systems International GmbH
Fasanenweg 5
70771 Leinfelden-Echterdingen, Germany
Tel: +49 40 30600 5544
E-Mail: plm.solutions@t-systems.com
Internet: <https://plm.t-systems.net/en-DE/cmi>

Published by

T-Systems International GmbH
PLM Marketing
Friedrich-Ebert-Alle 140
53113 Bonn, Germany