

## The Enterprise Level CATIA Teamcenter Integration



With CMI RII T-Systems extends the existing CMI CATIA integration suite in direction of Teamcenter. T-Systems transformed all the powerful features of CMI to the new PLM architecture, in a way that the CATIA integration is now a natural component of the Teamcenter Rich Client application.

### Characteristics

- High End direct CATIA V5 to Teamcenter Integration for collaborative design in a configured PDM environment.
- Highly configurable and customizable.
- Proven industry standard with many references.
- Immersive integrated within Teamcenter and CATIA V5 (CAA).
- Seamlessly integrated with VIS tools (WYSIWYG).
- Works smoothly with all other Rich Client applications, like the visualization tools, Structure Navigator and My Teamcenter.
- Provides access to a wide range of proven design processes from the automotive and aerospace industry coming from classic CMI and VPM.

### Benefits for our Teamcenter Enterprise Customers

- Familiar CATIA User Interface, thus best recognition and acceptance by CATIA designers
- High productivity from the first day on – 100% CMI compatibility.
- Easy migration: CMI RII is capable to handle CATIA data originating from CMI/Teamcenter Enterprise
- CMI customers can upgrade from classic CMI

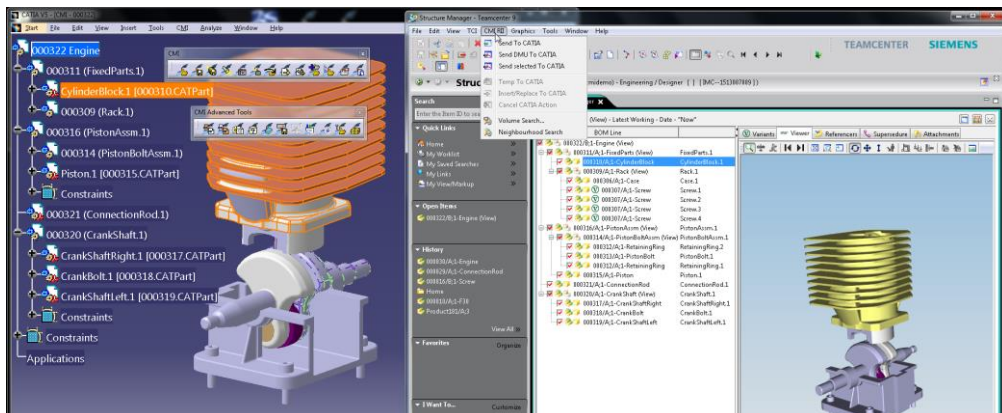
### Benefits for Customers coming from Teamcenter Engineering

Easy deployment of the product:

- Simple installation with installers for Windows and UNIX.
- No CAA RADE license required at the customers side.
- T-Systems delivers a fully working CATIA CAA module.

Direct support of the solution by T-Systems PLM team:

- Customizing/development support (off and on-site)
- Installation support
- On-site or WEB-based training



## Key Features

- Send structures to CATIA directly from Structure Manager (PSE).
- Synchronizes and reconnects CATIA structures to Teamcenter.
- Management of position matrices.
- Selections from VIS-viewer/mockup can be sent directly to CATIA.
- Change and usage control of CATIA data in a collaborative product development (e.g. version/configuration/view control, access management, life cycle and workflow)
- Integration of bill of material and geometry data
- Working with multiple level assembly structures
- Design in configuration context
- Intuitive CMI Workbench handling allows data transfer from one single PDM browser to CATIA V5

## Technical Highlights

- CATIA V5 local and released cache support
- On-the-fly creation of CATIA V5 assemblies out of Teamcenter Enterprise product structures
- Support of CATDrawing, CATProcess, CATAnalysis
- Support of Design Tables, CATCatalogs and alternative shape representations
- Virtual Workbench – Collects several product structures in a single CATIA V5 window
- CMI Archive – Packages whole CATIA structures in a single PDM object

## CMI RII Support Table

Application	Release
Teamcenter	10.1, 11.2, 12.0, 13.0, 14.0, 2312 other releases on request
CATIA V5	R21, V5-6R2012 to V5-6R2024 other releases on request

Platform	OS Level
Microsoft Windows	Windows 7 (64 Bit), Windows 10 (64 Bit)

### Contact

T-Systems International GmbH  
Fasanenweg 5  
70771 Leinfelden-Echterdingen, Germany  
Tel: +49 40 30600 5544  
E-Mail: [plm.solutions@t-systems.com](mailto:plm.solutions@t-systems.com)  
Internet: <https://plm.t-systems.net/en-DE/cmirii>

### Published by

T-Systems International GmbH  
PLM Marketing  
Friedrich-Ebert-Alle 140  
53113 Bonn, Germany